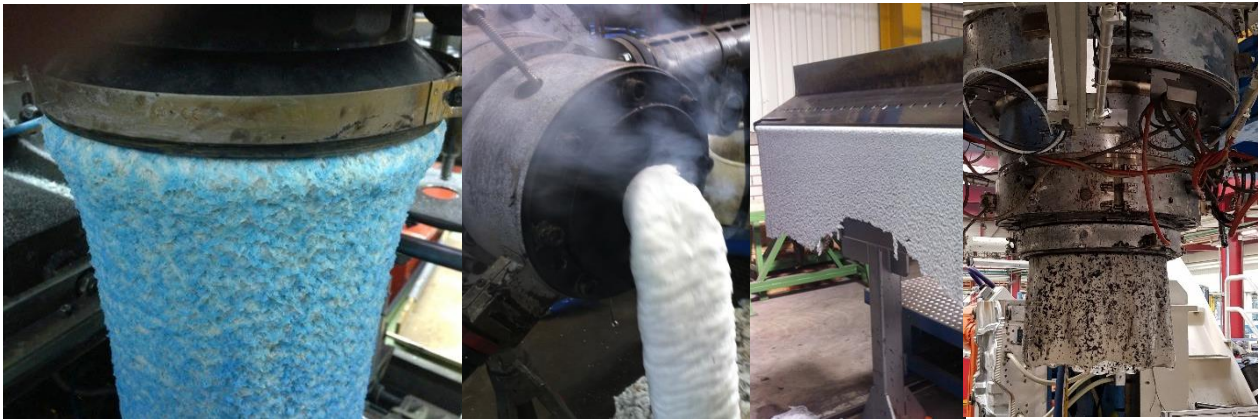


Poly Clear Prime range are by far the most impressive and easy to use polyolefin purging compounds on the market today, in some cases requiring only 8% of what you would normally use to purge clean. **Poly Clear Prime** range has proven itself in Blow Moulding to be without equal, be it multi-head 200ml bottles all the way up to 3000 litre IBC's, on Pipe Extrusion, **Poly Clear Prime** range can even change from black PE100 to yellow PE80 on basket dies historically the "holy grail" of achievements and Injection moulding, through hot runners and clearing antistatic ESD materials.

The **Poly Clear Prime** range also addresses carbon in the following ways:

- Highlights large deposits hiding in your machine during the colour change procedure.
- Stops materials degrading using the Safe Shutdown procedure
- Clears small carbon issues by flush through.
- Removes medium build up with a 2-hour soak.
- Loosens and removes stubborn carbon deposits during a decarbonising shutdown.
- Removes the most catastrophic carbon build-up (such as build-up in the regrind layer of 6/7 layer fuel tanks) using the MegaClean procedure.



Applications: Blow Moulding, Pipe Extrusion, Sheet Extrusion, Film Extrusion, Cable Extrusion, Injection Moulding

Temperature Range: 160°C (320°F) to 290°C (554°F)

FEATURES and BENEFITS:

- o Extremely easy to use.
- o Easily cleaned out by the next polyolefin
- o Effective at highlighting large carbon issues
- o Effective at cleaning light to catastrophic carbon issues
- o Becomes more effective the more you use
- o Could require only 8% of what you currently use
- o Food contact approved
- o Will dramatically reduce the scrap produced
- o Will have a huge impact on productivity performance through freeing up staff





Grade Selection:

Poly Clear Prime 100	Blow Moulding	- Small container Multi-Layer heads - Continuous Extrusion with worn screws or barrels
	Injection Moulding	- Polyolefin Hot Runners
	Cable Extrusion	- Material Changes TPU, TPE, FPVC
	Tube Extrusion	- Polyolefins
Poly Clear Prime HMEX	Blow Moulding	- Continuous Extrusion (Enhanced Cleaning)
	Injection Moulding	- Antistatic (ESD) polyolefins
	Pipe Extrusion	- PP mono and co extrusion
	Sheet Extrusion	- Polyolefin
Poly Clear Prime FT	Blow Moulding	- Accumulator blow moulding - UN material - 6/7 layer Fuel Tank regrind layer cleaning
	PEX Extrusion	- Carbon removal
	Pipe Extrusion	- PE100 and PE 80
Poly Clear Prime C HMEX	Injection Moulding	- Styrenic Hot Runners
	Extrusion	- Styrenics - Polyolefins
Poly Clear Prime Film	Blown Film	- LDPE, LLDPE
	Cast Film	- LDPE, LLDPE

